

Research/Biological Sample Courier Transport Form

Services to: Penn State Hershey, Benner Pike Lab, Penn State Main Campus

Information

- Samples are to be packaged and labeled in accordance with IATA Packaging Requirements
 - ***This form must be attached to the OUTSIDE of the container being shipped***
- Ensure packages are brought to the drop-off point BEFORE the scheduled pickup/departure. This service is for TUESDAY & FRIDAYS only
- Ensure you have made plans for your package to be picked up by appropriate personnel upon delivery to its final destination
 - ***If package(s) are being delivered to HMC, they will be delivered to the Hospital Quality Assurance Lab (Ground Floor)***
 - ***If package(s) are being delivered to PSU Main Campus, they will be delivered to the Millennium Science Complex loading dock***

P.I. at COM					
Phone () - (ext)					
P.I. at PSU					
Phone () - (ext)					
DELIVERY SERVICE FOR:					
<input type="checkbox"/> TUESDAY 10am at BPL	<input type="checkbox"/> TUESDAY 11am at PSU	<input type="checkbox"/> TUESDAY 4pm at HMC	<input type="checkbox"/> FRIDAY 10am at BPL	<input type="checkbox"/> FRIDAY 11am at PSU	<input type="checkbox"/> FRIDAY 4pm at HMC
I certify that this shipment contains biological/research materials that have been approved in advance for transport by the BioSafety Committee at PSU or HMC. The persons transporting the materials have been trained on IATA Packaging Requirements. <u>Principal Investigator initials required.</u>					P.I. Initials

Information

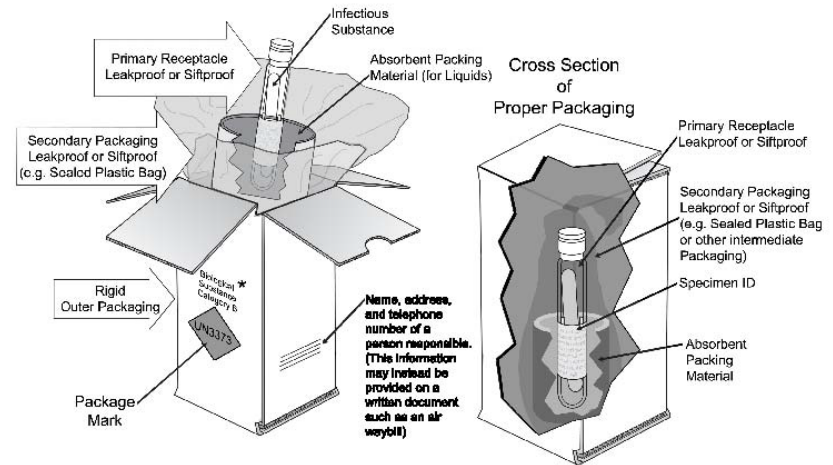
Samples must be packaged and labeled in accordance with IATA Packaging Requirements (right)

Delivery/Pickup times Tues & Fri:

- *Starting at HMC QA Lab: 8am*
- *to Benner Pike Lab (BPL): 10am*
- *to PSU Millennium Science Complex Dock: 11am*
- *Ending at HMC QA Lab: 4pm*

NOTE: Items must be dropped off BEFORE the listed times above

Biological/Research Sample Packaging Required IATA SOP



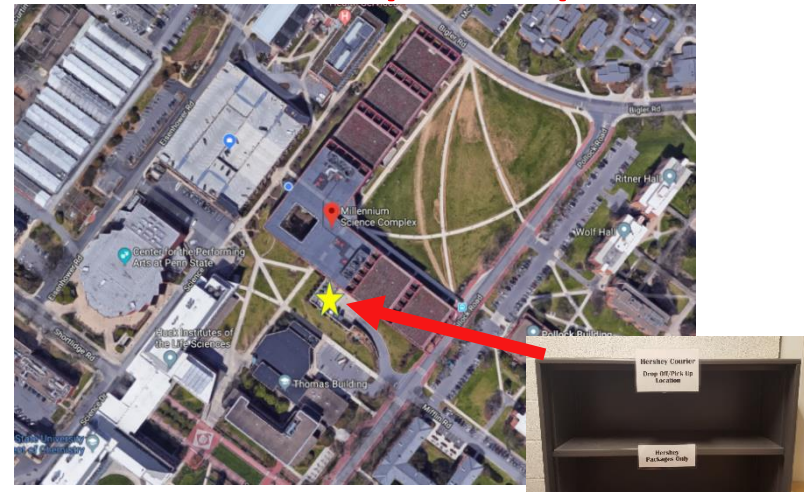
* The proper shipping names "Biological Substance, Category B", "Clinical Specimen" and "Diagnostic Specimen" are authorized until December 31, 2006. From January 1, 2007 only the proper shipping name "Biological Substance, Category B" will be authorized.

HMC Drop-off Map



HMC QA Lab
Glass Drop-off Window
Ground Floor

PSU Main Campus Drop-off



Loading Dock Area
Millennium Science Complex
University Park, PA