

# Research/Biological Sample Transport Form

*Between Penn State Hershey and Penn State Main Campus*

## Information

- Samples are to be packaged and labeled in accordance with IATA Packaging Requirements
  - ***This form must be attached to the OUTSIDE of the container being shipped***
- Ensure packages are brought to the drop-off point BEFORE the scheduled pickup/departure. This service is for TUESDAY & FRIDAYS only
- Ensure you have made plans for your package to be picked up by appropriate personnel upon delivery to its final destination

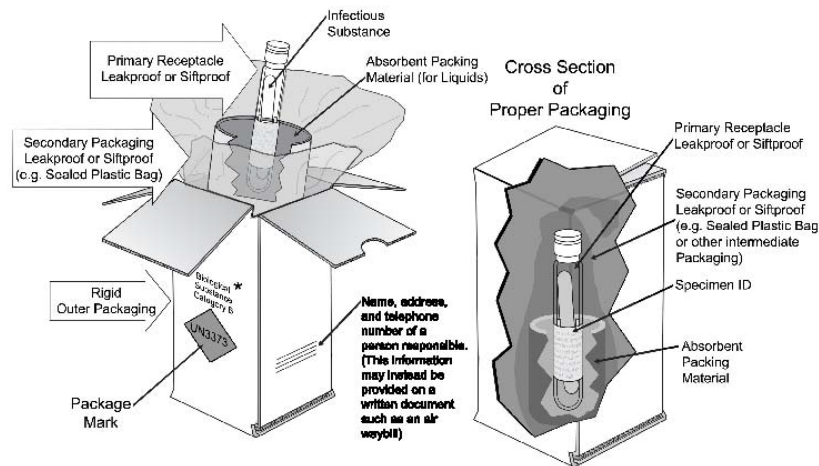
<b>P.I. at COM</b>			
Phone	(     )                      -                      (ext     )                      )		
<b>P.I. at PSU</b>			
Phone	(     )                      -                      (ext     )                      )		
Address of HMC/PSU Main Campus recipient			
I certify that this shipment contains biological/research materials that have been <b>approved in advance</b> for transport by the BioSafety Committee at PSU or HMC. The persons transporting the materials have been trained on IATA Packaging Requirements. <u>Principal Investigator initials required.</u>			_____ <b>P.I. Initials</b>

## Information

- Samples must be packaged and labeled in accordance with IATA Packaging Requirements
- Delivery/Pickup times Tues & Fri:
  - *Starting at HMC: 8am*
  - *to PSU Huck: 12pm*
  - *Ending at HMC: 4pm*

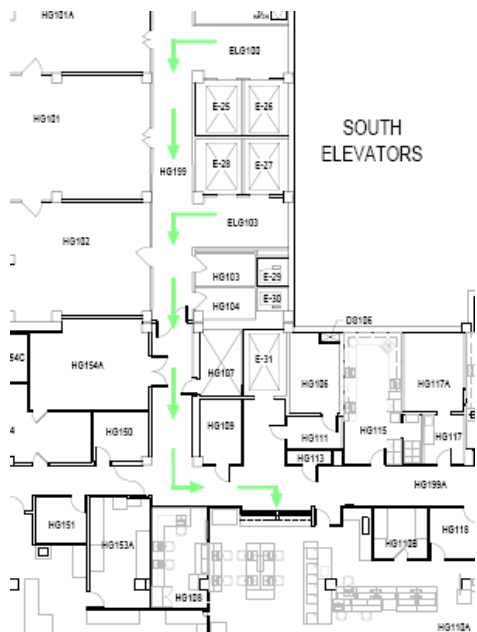
(NOTE: Items must be dropped off BEFORE the listed times above)

## Biological/Research Sample Packaging Required IATA SOP



\* The proper shipping names "Biological Substance, Category B", "Clinical Specimen" and "Diagnostic Specimen" are authorized until December 31, 2006. From January 1, 2007 only the proper shipping name "Biological Substance, Category B" will be authorized.

## HMC Drop-off Map



**HMC QA Lab**  
**Glass Drop-off Window**  
*Ground Floor*

## PSU Main Campus Drop-off Map



**Loading Dock Area**  
**Millennium Science Complex**  
**University Park, PA**